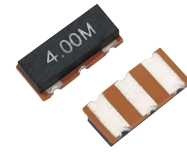


Feature

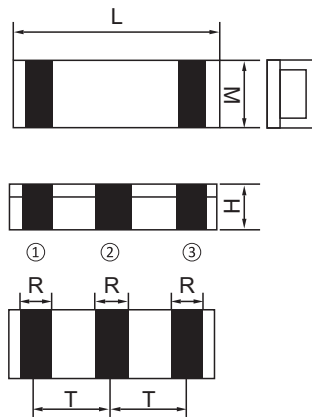
- High stability and adjustment-free
- Small size and low cost
- With Built-in Capacitor
- RoHS Compliant



Electrical Specifications

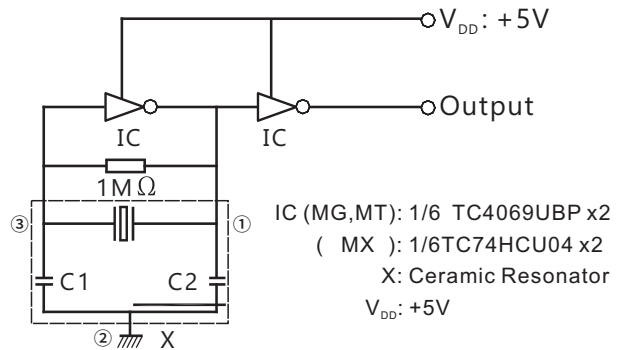
| Part Number | Frequency Range (MHz) | Frequency Accuracy (25°C)(%) | Stability over Temperature (-25~+85°C)(%) | Operating Temperature (°C) | Aging for Ten Years (%) |
|-------------|-----------------------|------------------------------|---|----------------------------|-------------------------|
| ZTTC□MG | 2.00-8.00 | ±0.5 | ±0.3 | -25~+85 | ±0.3 |
| ZTTCR□MG | 4.00-8.00 | ±0.5 | ±0.3 | -25~+85 | ±0.3 |
| ZTTC□MG | 8.00-12.00 | ±0.5 | ±0.3 | -25~+85 | ±0.3 |
| ZTTCS□MT | 6.00-13.00 | ±0.5 | ±0.4 | -25~+85 | ±0.3 |
| ZTTCV□MT | 8.00-13.00 | ±0.5 | ±0.4 | -25~+85 | ±0.3 |
| ZTTCS□MX | 13.01-60.00 | ±0.5 | ±0.3 | -25~+85 | ±0.3 |
| ZTTCV□MX | 16.00-60.00 | ±0.5 | ±0.3 | -25~+85 | ±0.3 |
| ZTTCW□MX | 20.00-60.00 | ±0.5 | ±0.3 | -25~+85 | ±0.3 |
| ZTTCZ□MX | 24.00-60.00 | ±0.5 | ±0.3 | -25~+85 | ±0.3 |
| ZTTCP□MG | 2.00-12.00 | ±0.5 | ±0.3 | -25~+85 | ±0.3 |

Dimension(mm)



① INPUT ② GROUND ③ OUTPUT

Test Circuit



| Part Number | Size(mm) | | | | | |
|-------------|----------|---------|-------------|---------|---------|----------|
| | L | W | H | P1 | P2 | T |
| ZTTC□MG | 7.4±0.2 | 3.4±0.2 | 1.8±0.2 | 1.2±0.2 | 1.2±0.2 | 2.5±0.2 |
| ZTTCR□MG | 4.5±0.2 | 2.0±0.2 | 1.2max | 0.8±0.2 | 0.8±0.2 | 1.5±0.2 |
| ZTTC□MG | 3.2±0.2 | 1.3±0.2 | 1.0max | 0.4±0.2 | 0.4±0.2 | 1.2±0.2 |
| ZTTCS□MT/MX | 4.7±0.2 | 4.1±0.2 | (1.2+A)±0.2 | 1.0±0.2 | 0.8±0.2 | 1.95±0.2 |
| ZTTCV□MT/MX | 3.7±0.2 | 3.1±0.2 | (1.0+A)±0.2 | 0.9±0.2 | 0.7±0.2 | 1.5±0.2 |
| ZTTCW□MX | 2.5±0.2 | 2.0±0.2 | 1.2max | 0.5±0.2 | 0.4±0.2 | 1.0±0.2 |
| ZTTCZ□MX | 2.2±0.2 | 1.8±0.2 | 1.2max | 0.4±0.2 | 0.5±0.2 | 0.85±0.2 |
| ZTTCP□MG | 6.0±0.2 | 3.0±0.2 | 2.0max | 1.2±0.2 | 1.2±0.2 | 2.5±0.2 |

Note: A stands for thickness of the ceramic element, which varies with the frequency. The range of the thickness difference is 0.1 to 0.7mm.